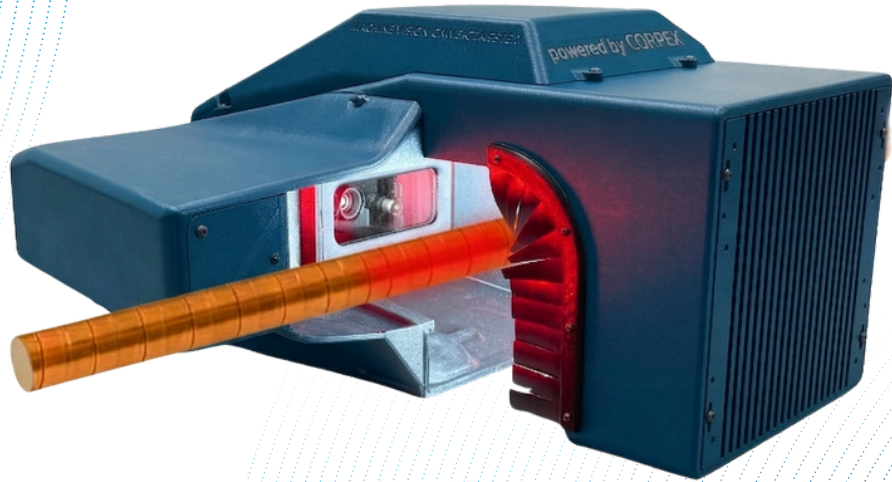


Machine Vision for Copper Taping



- BUILT FOR ARMORING LINES
- PRECISION TAPING INSPECTION
- AI DEFECT DETECTION
- CONTINUOUS LINE INSPECTION

Real-Time Control

Measures OD, pitch, overlap, and angle in real time. Detects missing tape, drift, and misalignment early to reduce scrap and rework. Automatically logs results for reporting and traceability.

- ✓ Real-time OD, pitch, overlap
- ✓ Tape angle monitoring
- ✓ Missing tape detection
- ✓ Loose tape detection
- ✓ Misalignment alerts
- ✓ Logs for QA traceability

Built for Armoring Lines

High-resolution imaging captures each revolution of the taping process.

Algorithms calculate pitch, overlap, and angle while flagging any drift from target settings.

Recommended Monitoring Points:

- Outside Diameter
- Pitch Control
- Overlap %
- Tape Alignment



Live Dimensional Tracking

Continuously measures outside diameter, pitch, and overlap percentage while the cable is being taped.



Instant Process Visibility

Operators see deviations immediately through the integrated HMI, helping keep taping consistent from start to finish.



Stop Defects Before They Spread

Detects missing tape, loose tape, and misalignment as they occur, reducing scrap and unnecessary rework.



Data You Can Prove

Stores inspection results automatically for trend analysis, reporting, and full production traceability.



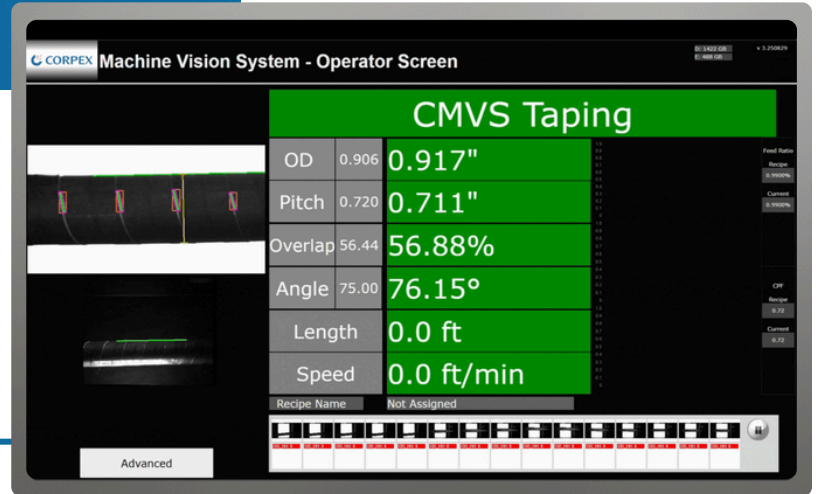
Scan the QR code to view CORPEX products, solutions, and contact details for machine vision systems.



+1 (416) 358 0005

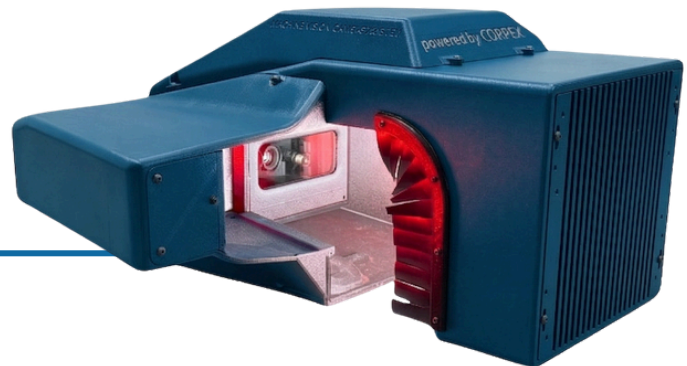
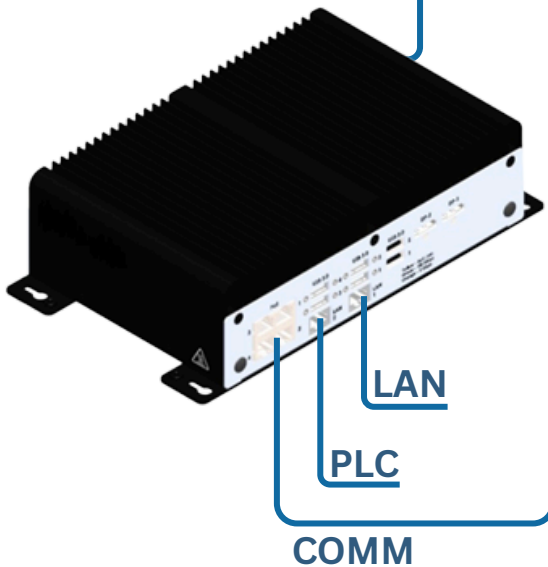
Machine Vision System COPPER TAPING

- User-friendly HMI screen displaying live measurements:
- OD, CPF, length, and speed
- Real-time monitoring for operators to quickly assess product quality
- Advanced engineer screens for parameter adjustments and setup
- Supports tolerance and recipe changes to match different products



DP/HDMI

- Industrial machine vision computer running all vision and logic processing
- LAN and PoE connectivity for cameras and network integration
- Display and USB ports for screens, setup, and data access
- 24 VDC powered and running the machine vision and AI software stack



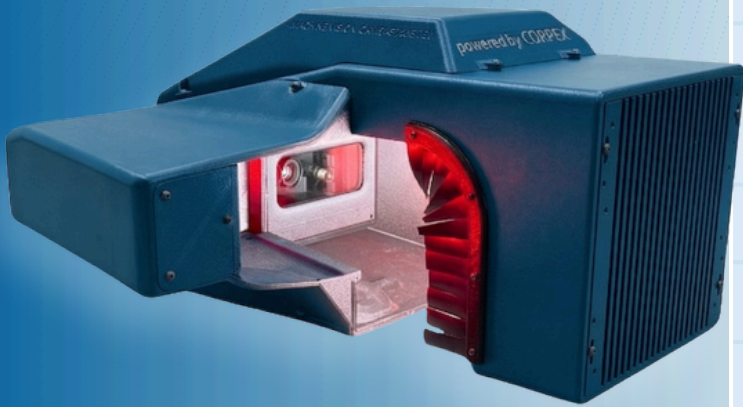
- Machine vision sensor head for product ranging from 4 to 100 mm (0.25 - 4.0 inches) in diameter
- Provides continuous inspection even at maximum line speed
- Pitch measurement precision up to 0.016 inches at 3-inch pitch and 0.012 inches up to 1-inch product size
- OD measurement precision of 0.006 inches on larger diameters and 0.003 inches on smaller diameters
- Real-time failure detection



Scan the QR code to view CORPEX products, solutions, and contact details for machine vision systems.



+1 (416) 358 0005



COPPER TAPING

1. Capture
2. Measure
3. Alert + Log

Specification	Description	
	Dimensions (H x W x D)	10.5 x 18 x 21 inches
Input Power	24V DC – M8 3 pin Connector Female	
Operating Temperature	32°F to 122°F	0°C to 50°C
Communication	3x Ethernet	
Operation	Integrated HMI	
Measurements	Operator and supervisor screen measurements given in imperial	
Target OD range	0.25 – 4 inches	4 – 102 mm
Smart light	Flexible mounting	



Key Advantages

- Inspects every revolution of the taping process
- Detects drift before product goes out of spec
- Reduces scrap and rework through early detection
- Supports quality documentation and traceability
- Designed for continuous inspection at line speed



Integration + Connectivity

- Connects to CMVS, SCADA, MES, and OPC systems
- Ethernet connectivity for network integration
- Operator + supervisor screen support
- Built for industrial environments
- Compatible with PLC-based automation environments



Scan the QR code to view CORPEX products, solutions, and contact details for machine vision systems.



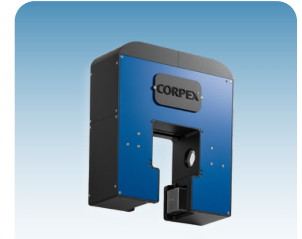
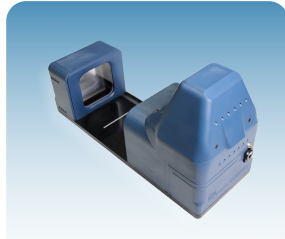
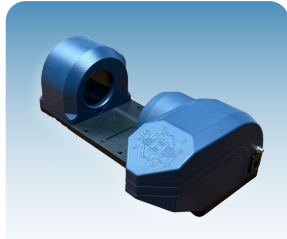
+1 (416) 358 0005

Explore CMVS Vision Systems



Choose the Right Model for Your Line

See CMVS options by target OD range, accuracy, max pitch, and connectivity.
Compare CMVS 35, 55, 100, and 125 to match your product size and inspection requirements.
Each system is designed for industrial use with operator-focused HMI and production-ready integration.



Specification	CMVS 35		CMVS 55		CMVS 100		CMVS 125	
Dimensions (H x W x D)	5.16 x 9.45 x 15.75 inches	131 x 240 x 400 mm	10.75 x 7.48 x 21.26 inches	273 x 190 x 540 mm	22.1 x 19.9 x 7.1 inches	561 x 505 x 108 mm	22.1 x 19.9 x 7.1 inches	561 x 505 x 108 mm
Input Power	24V DC – M8 3 pin Connector Female		24V DC – M8 3 pin Connector Female		24V DC – EVC811 4 pin Connector Female		24V DC – EVC811 4 pin Connector Female	
Operating Temperature	32°F to 122°F	0°C to 50°C	32°F to 122°F	0°C to 50°C	32°F to 122°F	0°C to 50°C	32°F to 122°F	0°C to 50°C
Communication	1x Ethernet		1x Ethernet		4x Ethernet		4x Ethernet	
Operation	Integrated HMI		Integrated HMI		Integrated HMI		Integrated HMI	
Measurements	Operator and supervisor screen measurements given in imperial		Operator and supervisor screen measurements given in imperial		Operator and supervisor screen measurements given in imperial		Operator and supervisor screen measurements given in imperial	
Target OD range	0.15–1.35 inches	4 – 35 mm	0.25–2.2 inches	6–55 mm	0.25–4 inches	6 – 100 mm	0.25–5 inches	6 – 125 mm
Accuracy	±0.001 in @ 80 ft/min	±0.0254 mm @ 25 m/min	±0.002 in @ 80 ft/min	±0.05 mm @ 25 m/min	±0.002 in @ 80 ft/min	±0.05 mm @ 25 m/min	±0.002 in @ 80 ft/min	±0.05 mm @ 25 m/min
Max pitch	0.65 in (18 CPF)	16.5 mm (59 CPM)	0.75 in (16 CPF)	19 mm (52 CPM)	0.75 in (16 CPF)	19 mm (52 CPM)	0.75 in (16 CPF)	19 mm (52 CPM)
Smart light	Flexible mounting		Flexible mounting		Optional		Optional	



Scan the QR code to view CORPEX products, solutions, and contact details for machine vision systems.



+1 (416) 358 0005