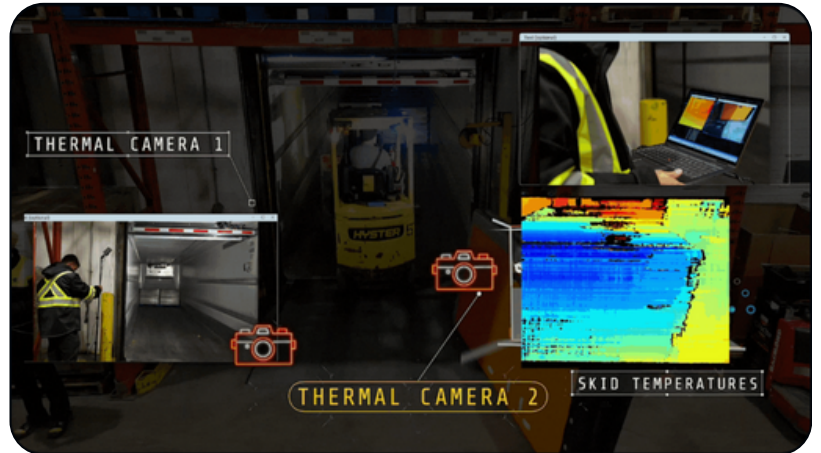


THERMO INSPECTION SYSTEM

AI-Enhanced Thermal Analysis for Production and Logistics

The CORPEX Thermo Inspection System delivers real-time, AI-powered thermal monitoring for manufacturing, warehousing, and logistics environments.



CORE FEATURES



Full-Field Thermal Imaging

Captures over 49,000 temperature points per frame at 20 frames per second for complete coverage



AI-Based Pattern Recognition

Identifies subtle heat trends and anomalies related to tool wear, lubrication issues, or thermal leaks



Real-Time Alerts and Visualization

Provides live temperature mapping and triggers alerts for out-of-range zones or uneven cooling



Process and Pallet Monitoring

Captures over 49,000 temperature points per frame at 20 frames per second for complete coverage



Data Logging & ERP Integration

Records and stores thermal data for performance tracking, reporting, and compliance audits



Seamless System Integration

Connects with PLC, SCADA, MES, and ERP systems for centralized monitoring and automated responses



Thermo Inspection System provides full-field temperature visibility across thousands of measurement points, detecting anomalies, equipment issues, or storage problems before they impact quality.